

NATURAL DISASTER REVIEW

In This Issue

- ❖ 2010 HURRICANE SEASON OVERVIEW
- ❖ HURRICANES
 - ❖ KARL
 - ❖ OTTO
 - ❖ TOMAS
- ❖ TROPICAL STORMS
 - ❖ MATTHEW
 - ❖ NICOLE
- ❖ OTHER NATURAL DISASTERS
 - ❖ HAITI (ONGOING)
 - ❖ HAITI CHOLERA
 - ❖ FLOODS & LANDSLIDES
- ❖ GET INVOLVED: HOW TO HELP!
 - ❖ IMMEDIATE FREE FREIGHT QUOTES
 - ❖ FREE WAREHOUSING
 - ❖ HUMANITARIAN LOGISTICS TOOLS
 - ❖ MEDIA PARTNERS & PROJECT AID THE AMERICAS

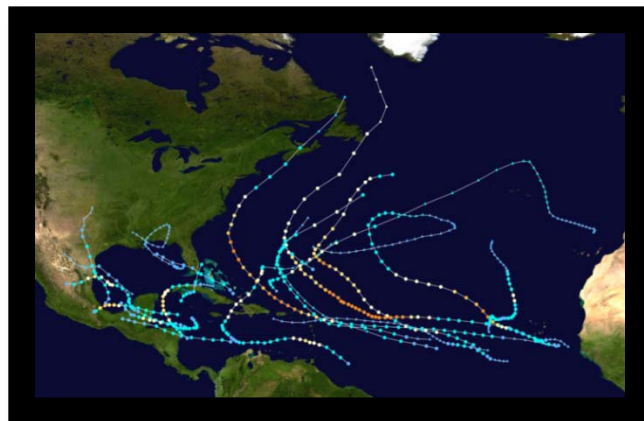
REVIEW

This year has been one of the most active hurricane seasons in decades. After six months everything may seem to be over, but much work is still to be done to help those who have been affected. Millions have been displaced, hundreds have died, and billions of dollars have been lost in the resulting damage.

In the meantime, floods, landslides, and other natural disasters have claimed the lives of many more thousands across South America & the Caribbean, not to mentioned the hundreds of thousands dead and millions affected in Haiti due to the earthquake on January 12 and the Cholera Epidemic which began in October.

While the United States has had a relatively quiet time with regards to natural disasters, our friends in South America & the Caribbean have not been as fortunate. Much assistance is still needed. Join us in providing help to those in need!

HURRICANE SEASON OVERVIEW



TOTAL DEPRESSIONS:	21
TOTAL STORMS:	19
HURRICANES:	12
MAJOR HURRICANES:	5
TOTAL FATALITIES:	259 <i>direct</i> ; 23 <i>indirect</i>
TOTAL DAMAGE:	\$11.424 billion +

HURRICANES



KARL – CATEGORY 3 – 120 MPH

FORMED:	<i>September 14, 2010</i>
DISSIPATED:	<i>September 18, 2010</i>
DAMAGE:	<i>\$5.6 billion</i>
AREAS AFFECTED:	<i>Belize, Yucatán Peninsula, Veracruz, Mexico</i>
AFTERMATH:	<i>Up to 500,000 people left homeless; 120 municipalities flooded; 22 fatalities.</i>

OTTO – CATEGORY 1 – 85 MPH

FORMED:	<i>October 6, 2010</i>
DISSIPATED:	<i>October 11, 2010</i>
DAMAGE:	<i>\$58 million +</i>
AREAS AFFECTED:	<i>Leeward Islands, Virgin Islands, Puerto Rico</i>

TOMAS – CATEGORY 2 – 100 MPH

FORMED:	<i>October 29, 2010</i>
DISSIPATED:	<i>November 7, 2010</i>
DAMAGE:	<i>\$572 million</i>
AREAS AFFECTED:	<i>Windward Islands, ABC Islands, Costa Rica, Jamaica, Haiti, Dominican Republic, Cuba and Bahamas</i>

TROPICAL STORMS

MATTHEW

FORMED:	<i>September 23, 2010</i>
DISSIPATED:	<i>September 26, 2010</i>
DAMAGE:	<i>\$5.6 billion</i>
AREAS AFFECTED:	<i>Venezuela, Nicaragua, Honduras, Guatemala, Mexico, Jamaica, Haiti, Costa Rica</i>
AFTERMATH:	<i>At least 109 fatalities; thousands displaced; mudslide in Oaxaca buried 300 houses.</i>

NICOLE

FORMED:	<i>September 28, 2010</i>
DISSIPATED:	<i>September 30, 2010</i>
DAMAGE:	<i>\$151.9 million</i>
AREAS AFFECTED:	<i>Cayman Islands, Jamaica, Cuba, Florida, Bahamas</i>
AFTERMATH:	<i>Nicole wrought lots of damage to Jamaica's infrastructure; 13 fatalities.</i>

OTHER NATURAL DISASTERS

HAITI (ONGOING)

As of today, Haiti's humanitarian situation is still considered to be in an emergency state. While IDPs¹ are being fed and clothed, there are still over 1,000,000 people living in tents and the cities are still in rubble. Some temporary shelters (t-shelters) have been provided, but as a whole, the affected areas lie in ruin and significant long-term cleanup/reconstruction is yet to begin. Although there are more than 800 tent cities providing some immediate shelter, the situation is critical since even the slightest storm can lead to serious damage. This was clearly portrayed by the storm that took place on September 24, 2010. Below is an excerpt from a report by the UN Office for the Coordination of Humanitarian Affairs (OCHA).

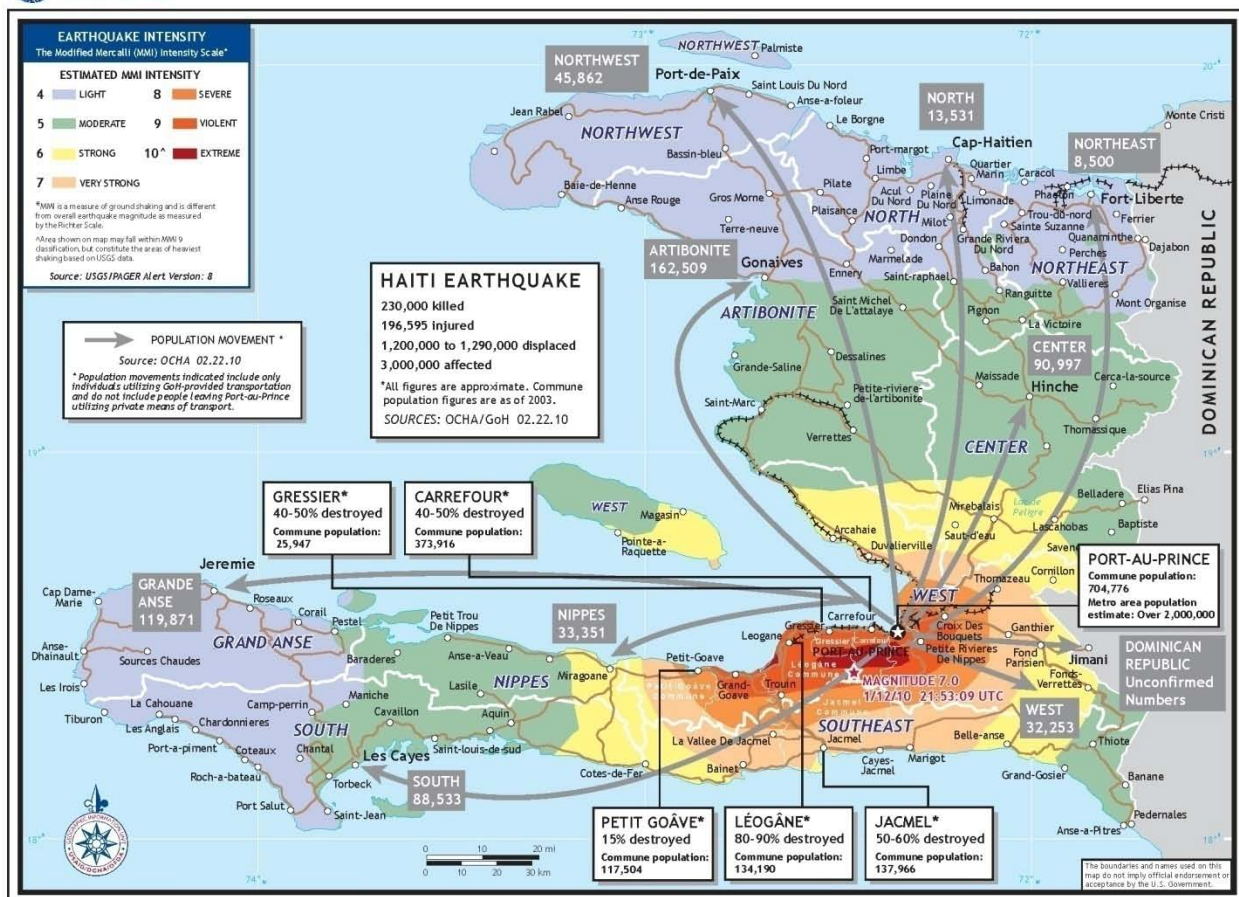
On 24 September a brief, powerful storm hit Port-au-Prince, causing 6 deaths, 67 injuries and affecting thousands of families. Agencies assessed over 300 camps and identified 262 which required assistance. The overall number of families in need of shelter assistance was estimated to be nearly 20,000. A response was launched immediately, with the priority needs identified as shelter and mitigation. As a result of these efforts agencies have cumulatively reached over 112,001 individuals. (OCHA)

Current Statistics by USAID

NUMBERS AT A GLANCE		SOURCE
Estimated Deaths	230,000	Government of Haiti – February 15
Verified Number of Displaced Individuals in Settlements	1.3 million	International Organization for Migration – August 31
Estimated Affected Population	3 million	U.N. – January 15



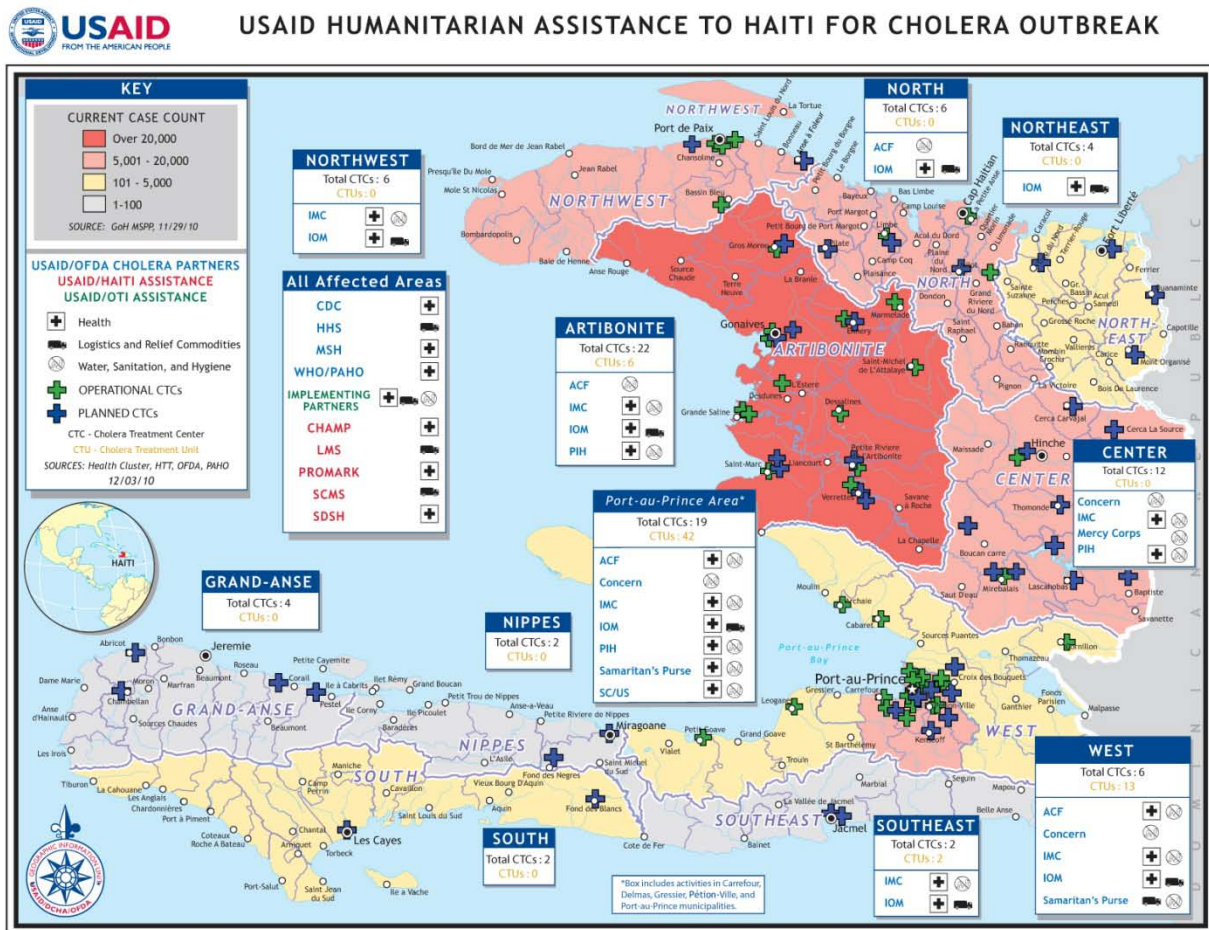
EARTHQUAKE-AFFECTED AREAS AND POPULATION MOVEMENT IN HAITI



¹ Internally Displaced Persons

HAITI (CHOLERA)

On October 22, 2010 a cholera epidemic broke out in the Artibonite Department of Haiti, located 62 miles north of Port-au-Prince. **As of December 7, 2010, the Ministry of Health (MSPP) has reported 2,120 deaths and 44,157 hospitalized cases.**² The cholera outbreak was worsened last month by the heavy flooding that resulted from Hurricane Tomas. The internal insecurity and instability has also led to an increase in violence and outrage. On December 2 there were 12 people hanged after being accused of spreading cholera through witchcraft. The situation in Haiti has not only remained stagnant, it seems to be getting more difficult to control as time passes. Below is a map that portrays the current spread of cholera in Haiti:



FLOODS & LANDSLIDES

WHEN: *Ongoing since early November.*

DAMAGE: *\$550+ million*

AREAS AFFECTED: *Colombia, Venezuela*

AFTERMATH: *200+ fatalities; 1.7 million+ left homeless*

² OCHA – United Nations Office for the Coordination of Humanitarian Affairs – *Haiti Cholera Situation Report #24*

FAST, EASY SHIPPING WITH OUR RELIEF CALCULATOR

Through **AmericasRelief Team's** new Freight Calculator, we are able to offer hassle-free shipping with immediate quotes and preferential pricing. Please visit our [website](#) to learn more.



**IMMEDIATE
CHARITY
FREIGHT
QUOTES** free!

ART provides NGOs the best options for shipping humanitarian relief aid cargo, efficiently and economically. ART collaborates with a large number of ocean freight and air cargo companies to leverage quantity discounts for its members and other NGOs.

FREE PREPOSITIONING & STAGING WAREHOUSE

While we hope that this hurricane season will prove to be less active than predicted, we all know that natural disasters will inevitably strike—suddenly and horrifically—somewhere in the region. Therefore **AmericasRelief Team** and corporate partner LAPARKAN, have arranged for the use of a prepositioning and staging warehouse at no cost to NGOs. Visit our [website](#) for details.

AmericasRelief Team
P.O Box 546135
Miami, Florida 33154
T (305) 884-0441
info@americasrelief.org



Emergency Response Center
3775 NW 77 Street
Miami, Florida 33147
Use NW 75 Street Entrance
T (305) 836-4393

RESOURCES FOR NGOS

ART provides leadership to NGOs by bringing together innovation, ideas and technology on humanitarian logistics. For more information on resources for NGOs and humanitarian logistics please visit our [NGO Resource Page](#). Here you can find our Logistics & Transportation Guide, our Logistics Help Request Form, and other valuable documents and information.

MEDIA PARTNERS



We are proud of our media partnership; created to give South Floridians an opportunity to reach out and help those who have been directly affected by catastrophic events.



AmericasRelief Team is a Florida private sector collaboration of corporations and non-profit organizations created to help our friends in the Americas in times of crisis and disasters.

AmericasRelief Team reacts to immediate crisis, provides ongoing logistics assistance, and conducts plans for future events in the region which will require effective coordination of humanitarian relief.

AmericasRelief Team

T (305) 884-0441

F (305) 260-4214

info@americasrelief.org

www.americasrelief.org



USAID
FROM THE AMERICAN PEOPLE

